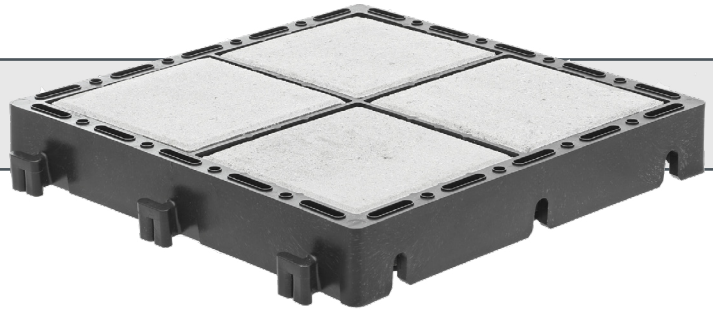


# ECORASTER® Bloxx - specs

Paved areas with less efforts - permeable!



recommended for: - parking spaces  
- barrier-free areas  
- utility spaces

Bloxx module	
<b>Dimensions:</b>	33 x 33 x 5 cm   12.99 x 12.99 x 1.97 "
<b>Weight per m<sup>2</sup>   10.76 ft<sup>2</sup></b>	7.02 kg   15.48 lbs
<b>Weight per piece:</b>	0.78 kg   1.72 lbs
<b>Interlock:</b>	36 notched connectors per m <sup>2</sup>
<b>Loadability:</b>	up to 800 t/m <sup>2</sup> *
<b>Compressive strength:</b>	up to 20 t point axle load (DIN 1072)
<b>Dimensional stability:</b>	-50° / 90° C   -58° / 194° F
<b>UV-resistant and weatherproof:</b>	according to DIN EN ISO 4892-2 and DIN EN 60068-2-5
<b>Infiltration performance:</b>	infiltration performance I <sub>10</sub> = 5200 in l/s*ha according to DIN 18130 (FGSV-MB)
<b>Material:</b>	LD-PE, recycled
<b>Tensile strength:</b>	> 5 kN/m
<b>Environmental compatibility:</b>	environmentally neutral according to OECD 202:2004
<b>Highly durable:</b>	according to DIN EN 124:2011 (D400)

\* refers to ECORASTER® Bloxx module incl. concrete blocks

Concrete blocks	
<b>Dimensions:</b>	14.2 x 14.2 x 4.5 cm   5.59 x 5.59 x 1.77 "
<b>Weight per piece:</b>	2.12 kg   4.67 lbs
<b>Dimension, indirect tensile strenght &amp; breaking load:</b>	according to DIN EN 1338; 2003-08
<b>Available colors:</b>	light grey (standard), red, white, anthracite; more colours upon request

Package	concrete blocks	Bloxx module
<b>Packaging:</b>	wooden pallet	plastic pallet
<b>Qty. of concrete blocks per pallet:</b>	432	-
<b>Qty. of layer per pallet:</b>	-	43
<b>Area per pallet:</b>	-	57.33 m <sup>2</sup>   617.09 ft <sup>2</sup>
<b>Weight per pallet:</b>	940 kg   2 072.35 lbs	412 kg   908.31 lbs
<b>Dimensions cm   inch:</b>	120 x 80 x 60   47.24 x 31.5 x 23.6	105 x 135 x 229   41.3 x 53.15 x 90.16
<b>Pallets per truck:</b>	20	22
<b>Area (qty.) per truck:</b>	8 440 pcs.	1 261.26 m <sup>2</sup>   13 576.09 ft <sup>2</sup>



**NOTE:**

- a. Please note the installation instructions on our website! Subject to change without prior notice. E. & O.E.
- b. The listed details are nominal dimensions and subject to a certain tolerance due to material changes
- c. ECORASTER® Bloxx according to RAL GZ-806

Your contact: